

S:\RDEIR_EIS_RecircAppendix_Mapbooks\REIS_Mapbook_Ch3_Index_SDE_10_5.mxd 2018522

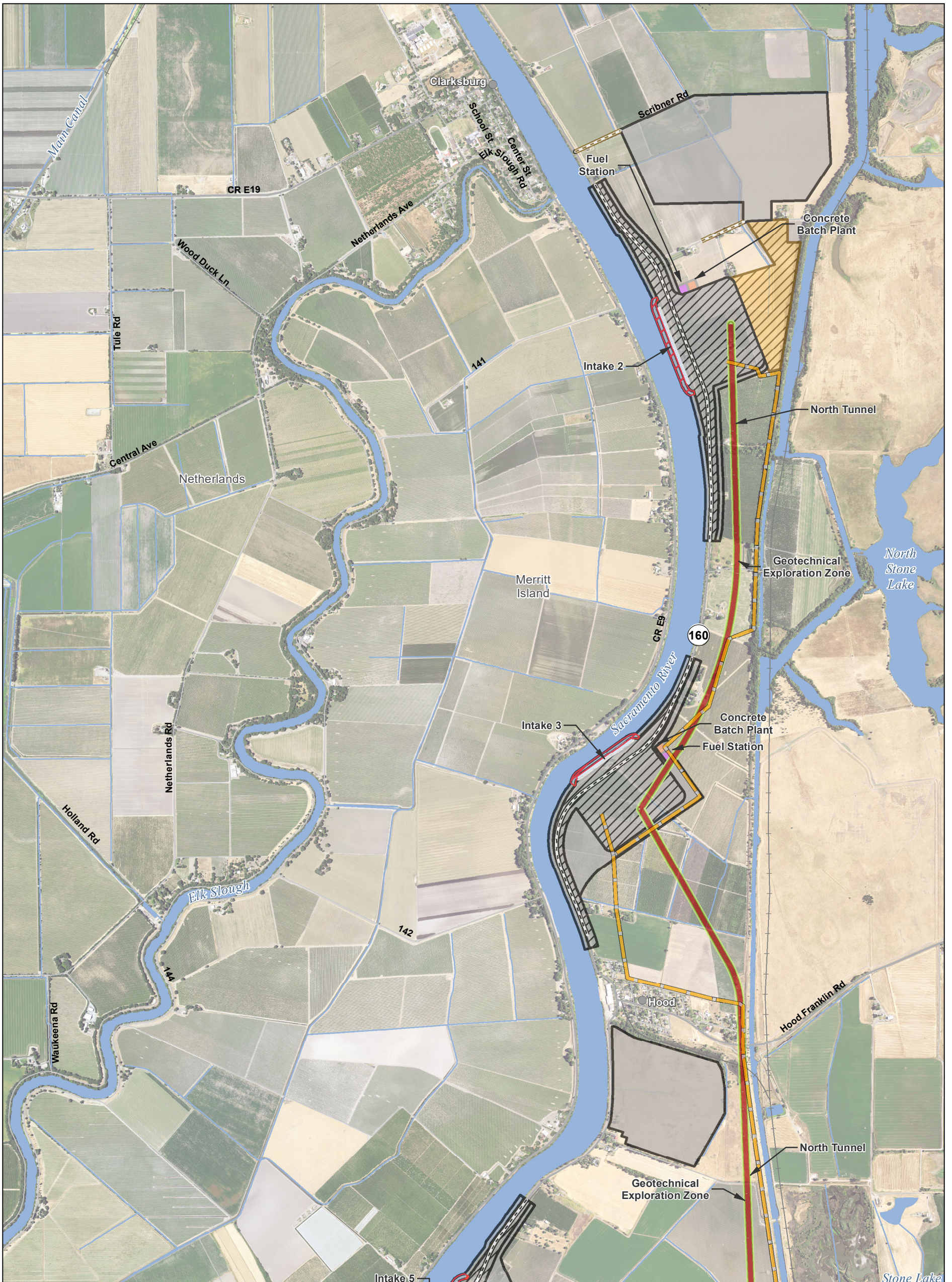
Legend					
Interstate	Point of Interconnection	Canal	Dredging	*Proposed Permanent Subsurface Impact	Reusable Tunnel Material Area
State Highway/Route	Proposed Permanent OH Transmission Line	Operable Barrier	Forebay	**Proposed Permanent Surface Impact	Barge Unloading Facility
Railroad	Proposed Temporary OH Transmission Line	Permanent Access	Forebay Embankment	Proposed Temporary Surface Impact	Safe Haven Work
Plan		Siphon	Forebay Overflow	Fuel Station	Concrete Batch Plant
Areas of Additional (Outside of Legal Delta; for Power Only)		Temporary Access	Intake	Geotech Planning	
Water		Tunnel			

*Surface impacts are not expected to result from subsurface features. **In-river features are not a permanent impact to navigation. ***Surface impacts will only occur at sites selected for geotechnical explorations. See Ch. 3, Section 3.6.1.10 for more information

Sources: DWR CWF Engineering (rev 1e 2018); NAIP 2016

Figure M3-4: Index Proposed Project

DRAFT: 29 May 2018



S:\RDEIR_EIS_RecircAppendix_Mapbooks\EIREIS_BTf_Mapbook_Ch3_SDE_10_5.mxd 2018522

Plan Area	Intake	Dredging	Proposed Temporary Surface Impact
Areas of Additional Analysis (Outside of Legal Delta; for Power Only)	Junction Structure	Forebay	Reusable Tunnel Material Area
Point of Interconnection	Main Construction Shaft	Forebay Embankment	Barge Unloading Facility
Proposed Permanent OH Transmission Line	Ventilation/Access Shaft	Forebay Overflow	Safe Haven Work
Proposed Temporary OH Transmission Line	Canal	Intake	Fuel Station
Operable Barrier	Permanent Access	*Proposed Permanent Subsurface Impact	Concrete Batch Plant
Siphon	Temporary Access	**Proposed Permanent Surface Impact	Geotech Planning
Tunnel			

*Surface impacts are not expected to result from subsurface features.

**In-river features are not a permanent impact to navigation.

***Surface impacts will only occur at sites selected for geotechnical explorations. See Ch. 3, Section 3.6.1.10 for more information

Sources: DWR CWF Engineering (rev 1e 2018); NAIP 2016

Figure M3-4: Sheet 1 of 12 Proposed Project

DRAFT: 29 May 2018



S:\RDEIR_EIS_RecircAppendix_Mapbooks\EIREIS_BTf_Mapbook_Ch3_SDE_10_5.mxd 2018522

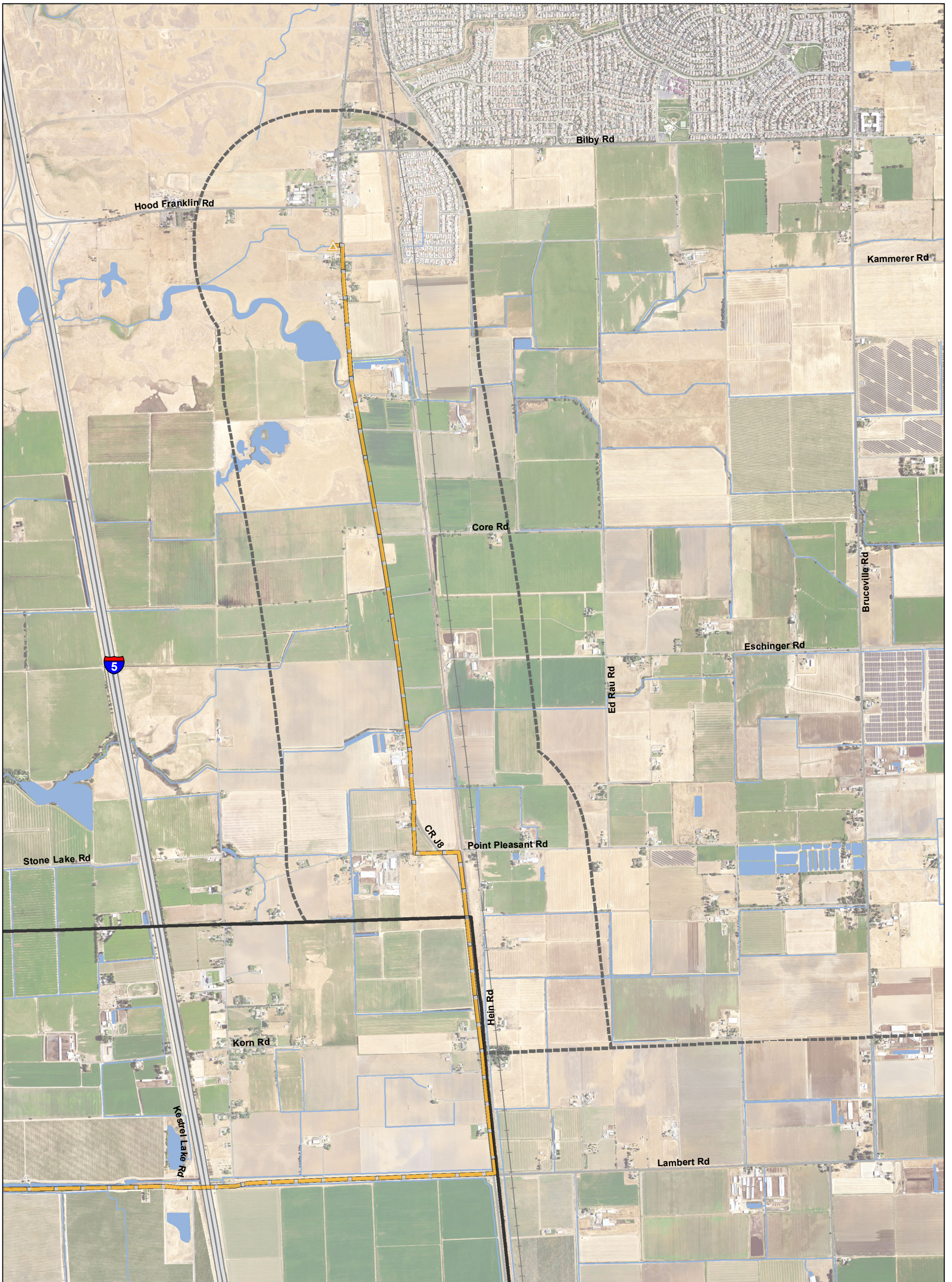
Plan Area	Intake	Dredging	Proposed Temporary Surface Impact
Areas of Additional Analysis (Outside of Legal Delta; for Power Only)	Junction Structure	Forebay	Reusable Tunnel Material Area
Point of Interconnection	Main Construction Shaft	Forebay Embankment	Barge Unloading Facility
Proposed Permanent OH Transmission Line	Ventilation/Access Shaft	Forebay Overflow	Safe Haven Work
Proposed Temporary OH Transmission Line	Canal	*Proposed Permanent Subsurface Impact	Fuel Station
	Operable Barrier	**Proposed Permanent Surface Impact	Concrete Batch Plant
	Permanent Access		Geotech Planning
	Siphon		
	Temporary Access		
	Tunnel		

*Surface impacts are not expected to result from subsurface features.
 **In-river features are not a permanent impact to navigation.
 ***Surface impacts will only occur at sites selected for geotechnical explorations.
 See Ch. 3, Section 3.6.1.10 for more information

Sources: DWR CWF Engineering (rev 1e 2018); NAIP 2016

Figure M3-4: Sheet 2 of 12 Proposed Project

DRAFT: 29 May 2018



S:\RDEIR_EIS_RecircAppendix_Mapbooks\EIREIS_BTf_Mapbook_Ch3_SDE_10_5.mxd 2018522

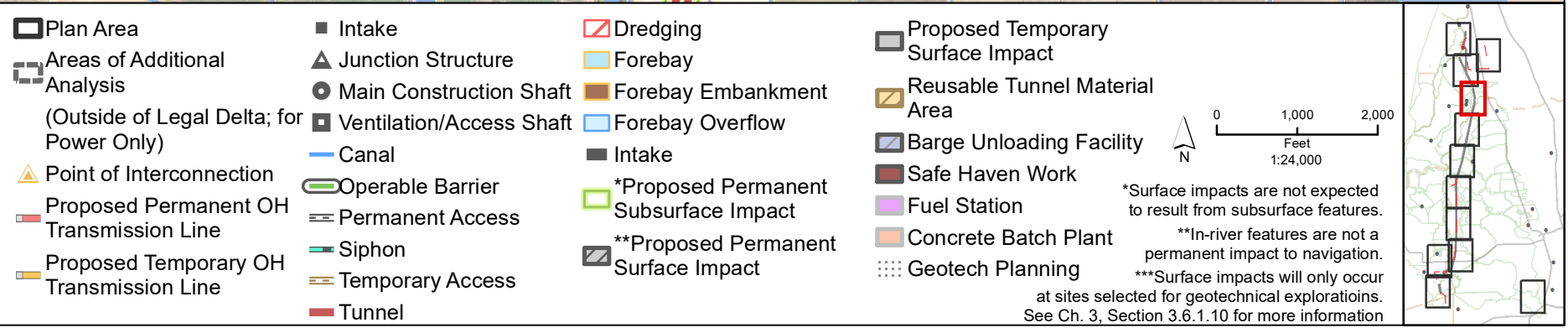
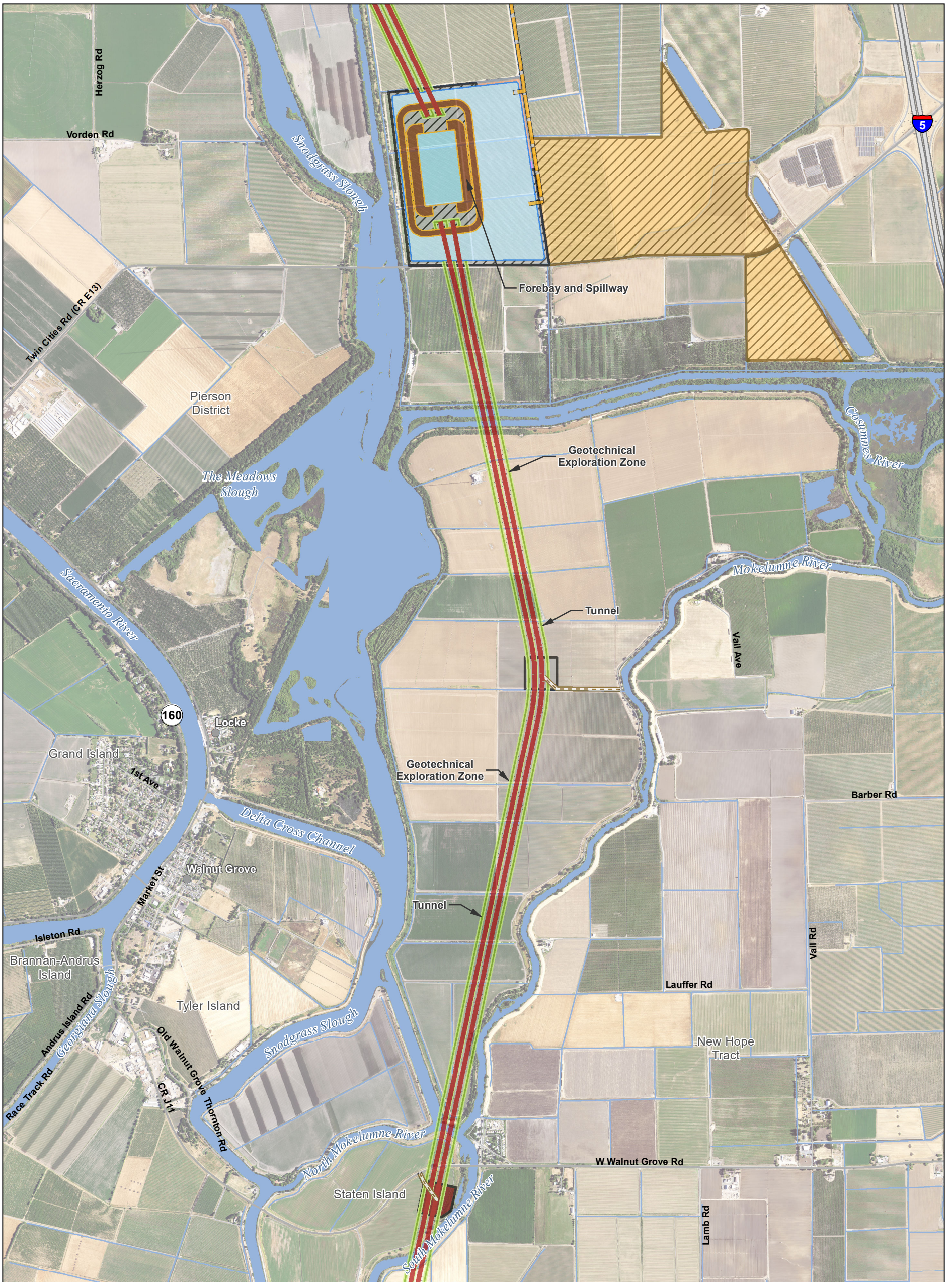
Plan Area	Intake	Dredging	Proposed Temporary Surface Impact
Areas of Additional Analysis (Outside of Legal Delta; for Power Only)	Junction Structure	Forebay	Reusable Tunnel Material Area
Point of Interconnection	Main Construction Shaft	Forebay Embankment	Barge Unloading Facility
Proposed Permanent OH Transmission Line	Ventilation/Access Shaft	Forebay Overflow	Safe Haven Work
Proposed Temporary OH Transmission Line	Canal	Intake	Fuel Station
Operable Barrier	Permanent Access	*Proposed Permanent Subsurface Impact	Concrete Batch Plant
Siphon	Temporary Access	**Proposed Permanent Surface Impact	Geotech Planning
Tunnel			

*Surface impacts are not expected to result from subsurface features.
 **In-river features are not a permanent impact to navigation.
 ***Surface impacts will only occur at sites selected for geotechnical explorations. See Ch. 3, Section 3.6.1.10 for more information

Sources: DWR CWF Engineering (rev 1e 2018); NAIP 2016

Figure M3-4: Sheet 3 of 12 Proposed Project

DRAFT: 29 May 2018

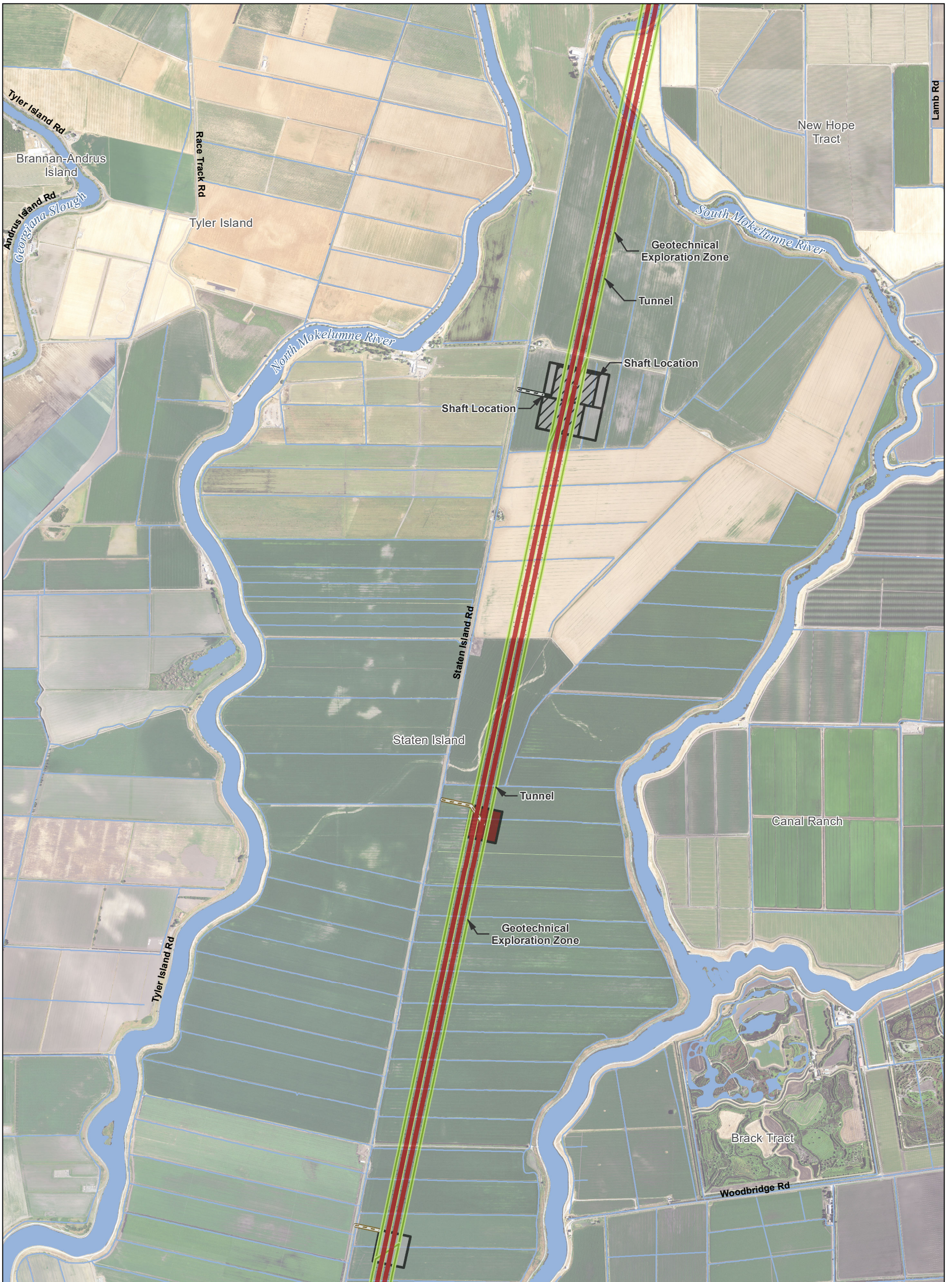


S:\RDEIR_EIS_RecircAppendix_Mapbooks\EIREIS_BTf_Mapbook_Ch3_SDE_10_5.mxd 2018522

Sources: DWR CWF Engineering (rev 1e 2018); NAIP 2016

Figure M3-4: Sheet 4 of 12 Proposed Project

DRAFT: 29 May 2018



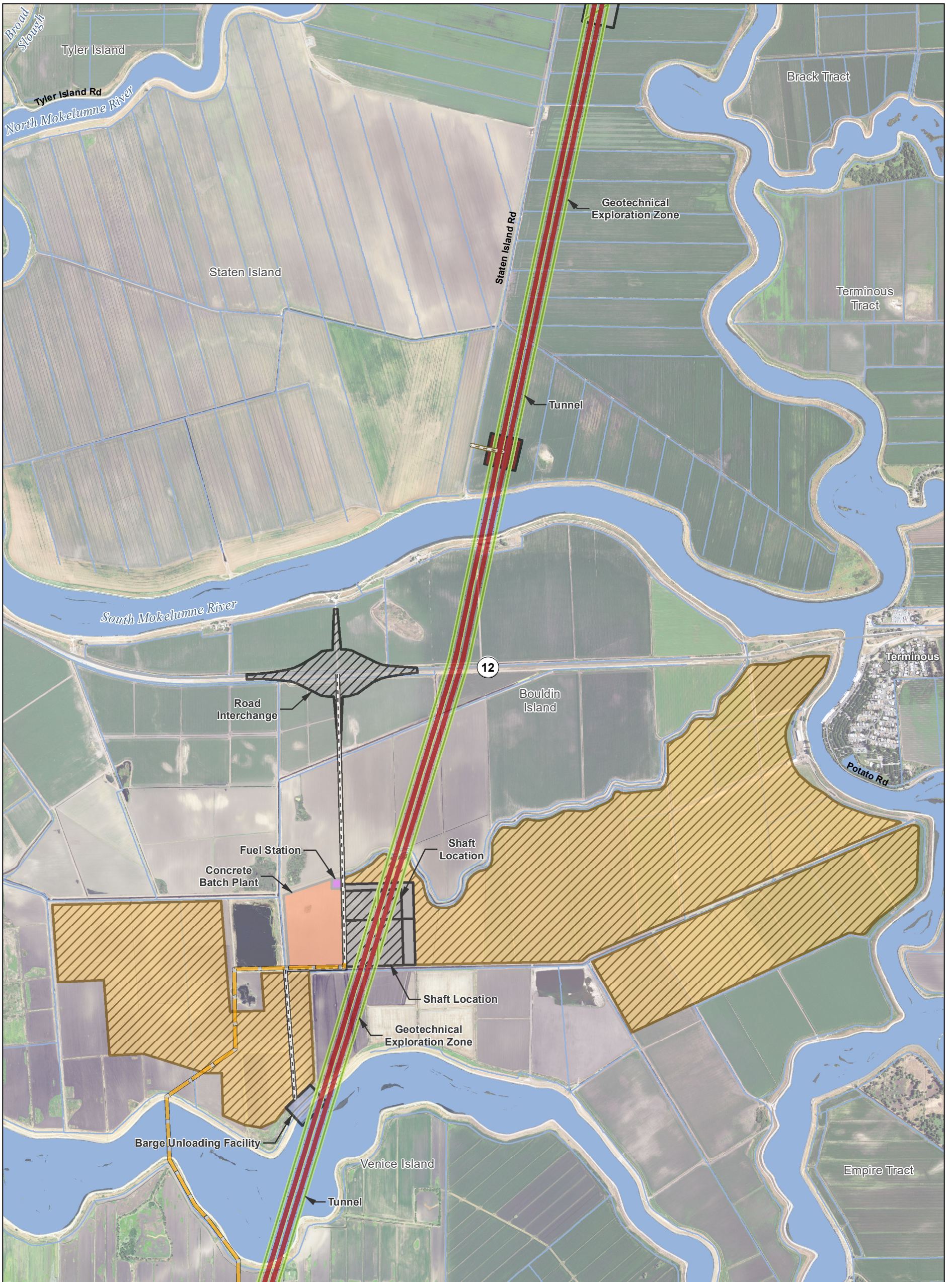
S:\RDEIR_EIS_RecircAppendix_Mapbooks\EIREIS_BTIF_Mapbook_Ch3_SDE_10_5.mxd 2018522

<ul style="list-style-type: none"> Plan Area Areas of Additional Analysis (Outside of Legal Delta; for Power Only) Point of Interconnection Proposed Permanent OH Transmission Line Proposed Temporary OH Transmission Line 	<ul style="list-style-type: none"> Intake Junction Structure Main Construction Shaft Ventilation/Access Shaft Canal Operable Barrier Permanent Access Siphon Temporary Access Tunnel 	<ul style="list-style-type: none"> Dredging Forebay Forebay Embankment Forebay Overflow Intake *Proposed Permanent Subsurface Impact **Proposed Permanent Surface Impact 	<ul style="list-style-type: none"> Proposed Temporary Surface Impact Reusable Tunnel Material Area Barge Unloading Facility Safe Haven Work Fuel Station Concrete Batch Plant Geotech Planning
---	--	--	--

Sources: DWR CWF Engineering (rev 1e 2018); NAIP 2016

*Surface impacts are not expected to result from subsurface features.
 **In-river features are not a permanent impact to navigation.
 ***Surface impacts will only occur at sites selected for geotechnical explorations. See Ch. 3, Section 3.6.1.10 for more information

Figure M3-4: Sheet 5 of 12 Proposed Project



S:\RDEIR_EIS_RecircAppendix_Mapbooks\EIREIS_BTIF_Mapbook_Ch3_SDE_10_5.mxd 2018522

Plan Area	Intake	Dredging	Proposed Temporary Surface Impact
Areas of Additional Analysis (Outside of Legal Delta; for Power Only)	Junction Structure	Forebay	Reusable Tunnel Material Area
Point of Interconnection	Main Construction Shaft	Forebay Embankment	Barge Unloading Facility
Proposed Permanent OH Transmission Line	Ventilation/Access Shaft	Forebay Overflow	Safe Haven Work
Proposed Temporary OH Transmission Line	Canal	*Proposed Permanent Subsurface Impact	Fuel Station
	Operable Barrier	**Proposed Permanent Surface Impact	Concrete Batch Plant
	Permanent Access		Geotech Planning
	Siphon		
	Temporary Access		
	Tunnel		

*Surface impacts are not expected to result from subsurface features.
 **In-river features are not a permanent impact to navigation.
 ***Surface impacts will only occur at sites selected for geotechnical explorations.
 See Ch. 3, Section 3.6.1.10 for more information

Sources: DWR CWF Engineering (rev 1e 2018); NAIP 2016

Figure M3-4: Sheet 6 of 12 Proposed Project

DRAFT: 29 May 2018



S:\RDEIR_EIS_RecircAppendix_Mapbooks\EIREIS_BTf_Mapbook_Ch3_SDE_10_5.mxd 2018522

Plan Area	Intake	Dredging	Proposed Temporary Surface Impact
Areas of Additional Analysis (Outside of Legal Delta; for Power Only)	Junction Structure	Forebay	Reusable Tunnel Material Area
Point of Interconnection	Main Construction Shaft	Forebay Embankment	Barge Unloading Facility
Proposed Permanent OH Transmission Line	Ventilation/Access Shaft	Forebay Overflow	Safe Haven Work
Proposed Temporary OH Transmission Line	Canal	Intake	Fuel Station
Operable Barrier	Permanent Access	*Proposed Permanent Subsurface Impact	Concrete Batch Plant
Siphon	Temporary Access	**Proposed Permanent Surface Impact	Geotech Planning
Tunnel			

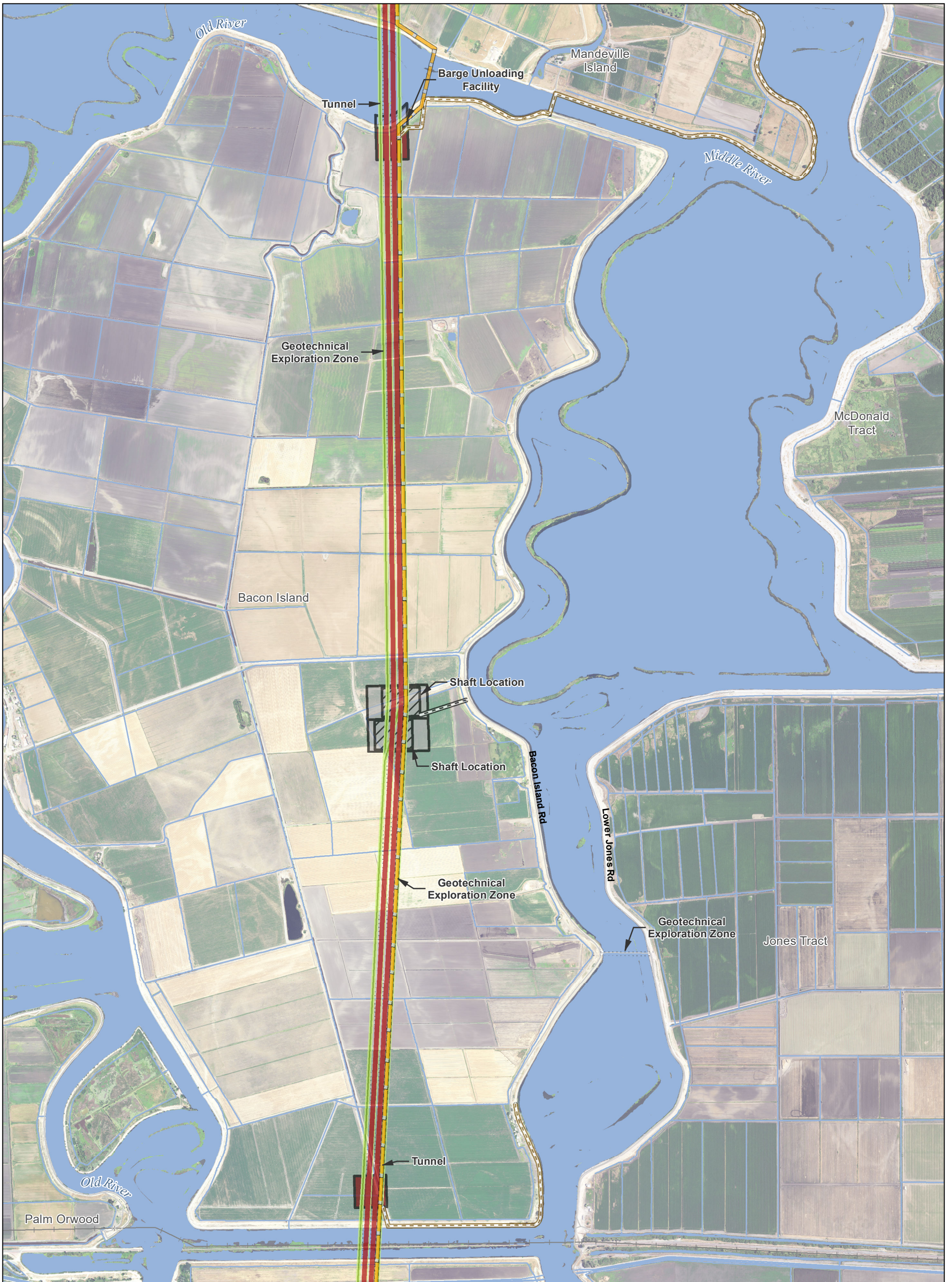
0 1,000 2,000
Feet
1:24,000

*Surface impacts are not expected to result from subsurface features.
 **In-river features are not a permanent impact to navigation.
 ***Surface impacts will only occur at sites selected for geotechnical explorations.
 See Ch. 3, Section 3.6.1.10 for more information

Sources: DWR CWF Engineering (rev 1e 2018); NAIP 2016

DRAFT: 29 May 2018

Figure M3-4: Sheet 7 of 12 Proposed Project



S:\RDEIR_EIS_RecircAppendix_Mapbooks\EIREIS_BTf_Mapbook_Ch3_SDE_10_5.mxd 2018522

<ul style="list-style-type: none"> Plan Area Areas of Additional Analysis (Outside of Legal Delta; for Power Only) Point of Interconnection Proposed Permanent OH Transmission Line Proposed Temporary OH Transmission Line 	<ul style="list-style-type: none"> Intake Junction Structure Main Construction Shaft Ventilation/Access Shaft Canal Operable Barrier Permanent Access Siphon Temporary Access Tunnel 	<ul style="list-style-type: none"> Dredging Forebay Forebay Embankment Forebay Overflow Intake *Proposed Permanent Subsurface Impact **Proposed Permanent Surface Impact 	<ul style="list-style-type: none"> Proposed Temporary Surface Impact Reusable Tunnel Material Area Barge Unloading Facility Safe Haven Work Fuel Station Concrete Batch Plant Geotech Planning
---	--	--	--

0 1,000 2,000
Feet
1:24,000

*Surface impacts are not expected to result from subsurface features.
 **In-river features are not a permanent impact to navigation.
 ***Surface impacts will only occur at sites selected for geotechnical explorations. See Ch. 3, Section 3.6.1.10 for more information

Sources: DWR CWF Engineering (rev 1e 2018); NAIP 2016

DRAFT: 29 May 2018

Figure M3-4: Sheet 8 of 12 Proposed Project

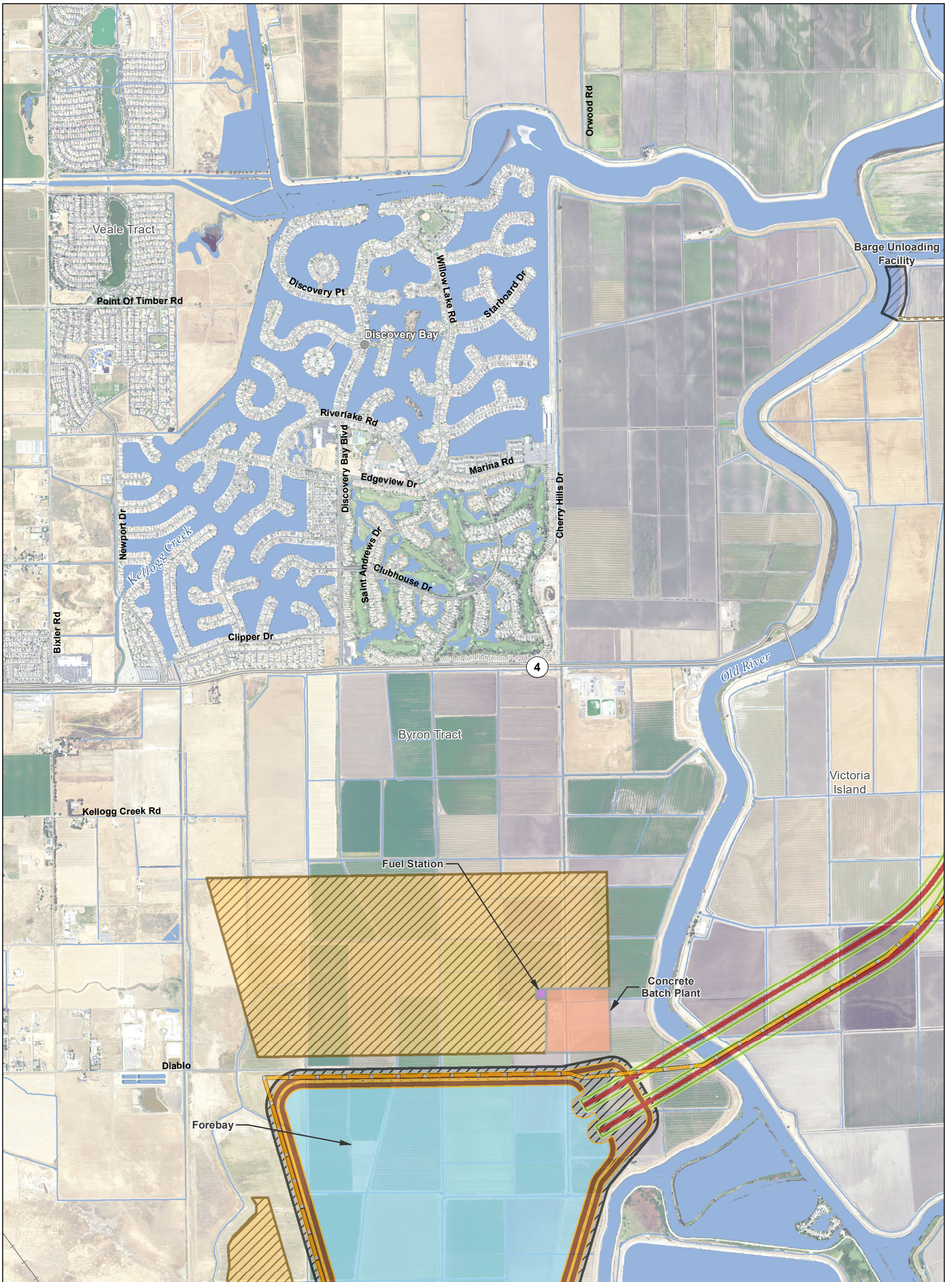


S:\RDEIR_EIS_RecircAppendix_Mapbooks\EIREIS_BTf_Mapbook_Ch3_SDE_10_5.mxd 2018522

<ul style="list-style-type: none"> Plan Area Areas of Additional Analysis (Outside of Legal Delta; for Power Only) Point of Interconnection Proposed Permanent OH Transmission Line Proposed Temporary OH Transmission Line 	<ul style="list-style-type: none"> Intake Junction Structure Main Construction Shaft Ventilation/Access Shaft Canal Operable Barrier Permanent Access Siphon Temporary Access Tunnel 	<ul style="list-style-type: none"> Dredging Forebay Forebay Embankment Forebay Overflow Intake *Proposed Permanent Subsurface Impact **Proposed Permanent Surface Impact 	<ul style="list-style-type: none"> Proposed Temporary Surface Impact Reusable Tunnel Material Area Barge Unloading Facility Safe Haven Work Fuel Station Concrete Batch Plant Geotech Planning
---	--	--	--

*Surface impacts are not expected to result from subsurface features.
**In-river features are not a permanent impact to navigation.
***Surface impacts will only occur at sites selected for geotechnical explorations. See Ch. 3, Section 3.6.1.10 for more information

Sources: DWR CWF Engineering (rev 1e 2018); NAIP 2016



S:\RDEIR_EIS_Recirc\Appendix_Mapbooks\EIREIS_BTIF_Mapbook_Ch3_SDE_10_5.mxd 2018522

Plan Area	Intake	Dredging	Proposed Temporary Surface Impact
Areas of Additional Analysis (Outside of Legal Delta; for Power Only)	Junction Structure	Forebay	Reusable Tunnel Material Area
Point of Interconnection	Main Construction Shaft	Forebay Embankment	Barge Unloading Facility
Proposed Permanent OH Transmission Line	Ventilation/Access Shaft	Forebay Overflow	Safe Haven Work
Proposed Temporary OH Transmission Line	Canal	*Proposed Permanent Subsurface Impact	Fuel Station
Operable Barrier	Permanent Access	**Proposed Permanent Surface Impact	Concrete Batch Plant
Siphon	Temporary Access		Geotech Planning
Tunnel			

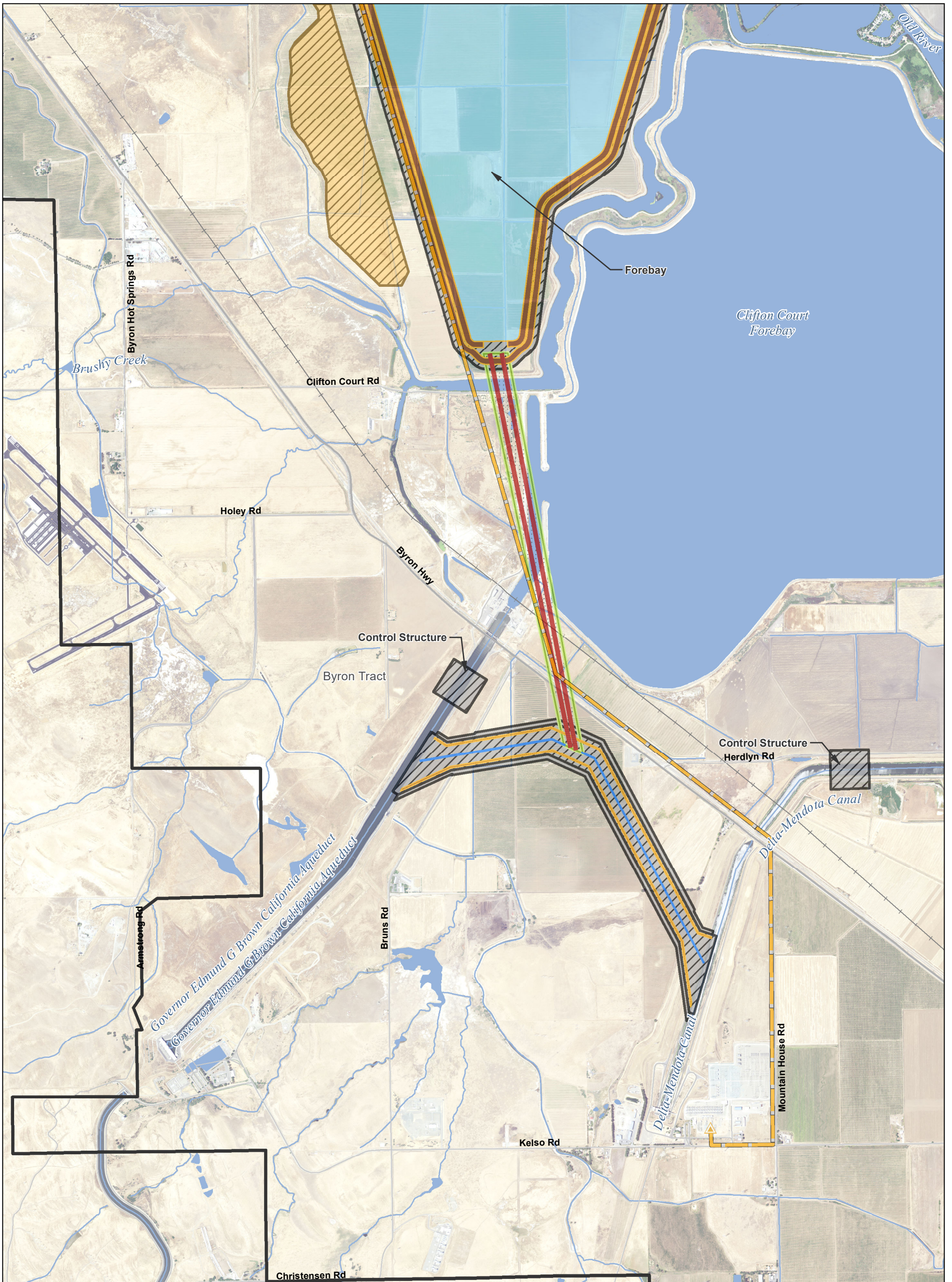
0 1,000 2,000
Feet
1:24,000

*Surface impacts are not expected to result from subsurface features.
 **In-river features are not a permanent impact to navigation.
 ***Surface impacts will only occur at sites selected for geotechnical explorations.
 See Ch. 3, Section 3.6.1.10 for more information

Sources: DWR CWF Engineering (rev 1e 2018); NAIP 2016

Figure M3-4: Sheet 10 of 12 Proposed Project

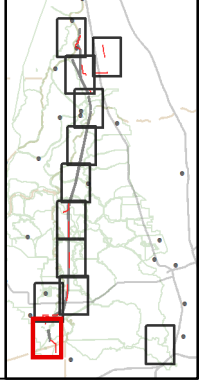
DRAFT: 29 May 2018



- | | | | |
|---|--------------------------|---------------------------------------|-----------------------------------|
| Plan Area | Intake | Dredging | Proposed Temporary Surface Impact |
| Areas of Additional Analysis (Outside of Legal Delta; for Power Only) | Junction Structure | Forebay | Reusable Tunnel Material Area |
| Point of Interconnection | Main Construction Shaft | Forebay Embankment | Barge Unloading Facility |
| Proposed Permanent OH Transmission Line | Ventilation/Access Shaft | Forebay Overflow | Safe Haven Work |
| Proposed Temporary OH Transmission Line | Canal | Intake | Fuel Station |
| | Operable Barrier | *Proposed Permanent Subsurface Impact | Concrete Batch Plant |
| | Permanent Access | **Proposed Permanent Surface Impact | Geotech Planning |
| | Siphon | | |
| | Temporary Access | | |
| | Tunnel | | |

0 1,000 2,000
Feet
1:24,000

*Surface impacts are not expected to result from subsurface features.
**In-river features are not a permanent impact to navigation.
***Surface impacts will only occur at sites selected for geotechnical explorations. See Ch. 3, Section 3.6.1.10 for more information



S:\RDEIR_EIS_RecircAppendix_Mapbooks\EIREIS_BTf_Mapbook_Ch3_SDE_10_5.mxd 2018522

Sources: DWR CWF Engineering (rev 1e 2018); NAIP 2016

Figure M3-4: Sheet 11 of 12 Proposed Project

DRAFT: 29 May 2018



S:\RDEIR_EIS_RecircAppendix_Mapbooks\EIREIS_BTf_Mapbook_Ch3_SDE_10_5.mxd 2018522

<ul style="list-style-type: none"> Plan Area Areas of Additional Analysis (Outside of Legal Delta; for Power Only) Point of Interconnection Proposed Permanent OH Transmission Line Proposed Temporary OH Transmission Line 	<ul style="list-style-type: none"> Intake Junction Structure Main Construction Shaft Ventilation/Access Shaft Canal Operable Barrier Permanent Access Siphon Temporary Access Tunnel 	<ul style="list-style-type: none"> Dredging Forebay Forebay Embankment Forebay Overflow Intake *Proposed Permanent Subsurface Impact **Proposed Permanent Surface Impact 	<ul style="list-style-type: none"> Proposed Temporary Surface Impact Reusable Tunnel Material Area Barge Unloading Facility Safe Haven Work Fuel Station Concrete Batch Plant Geotech Planning
---	--	--	--

0 1,000 2,000
Feet
1:24,000

*Surface impacts are not expected to result from subsurface features.
 **In-river features are not a permanent impact to navigation.
 ***Surface impacts will only occur at sites selected for geotechnical explorations.
 See Ch. 3, Section 3.6.1.10 for more information

Sources: DWR CWF Engineering (rev 1e 2018); NAIP 2016

Figure M3-4: Sheet 12 of 12 Proposed Project

DRAFT: 29 May 2018